

Service Manual for L1 and L2

Nokia Lumia 610

RM-835 RM-836

Key features

- Most affordable Nokia Lumia yet
- Updated Windows Phone operating system
- 8 GB internal mass memory
- 3.7" WVGA 800 x 480 pixels LCD TFT display

Version 1.0



Exploded view



More >

Disassembly steps



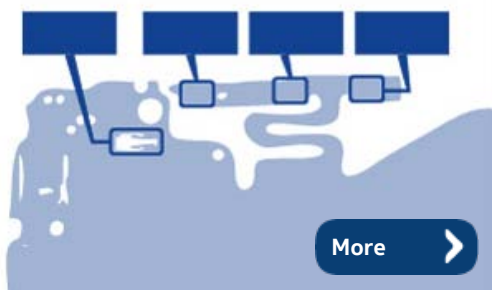
More >

Assembly steps



More >

Solder components



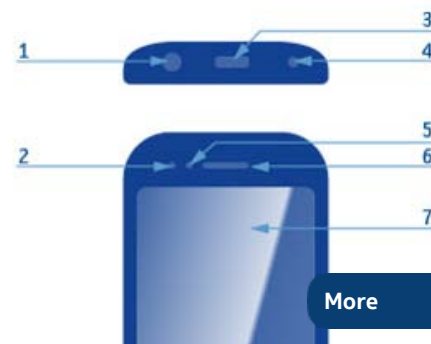
More >

Service devices



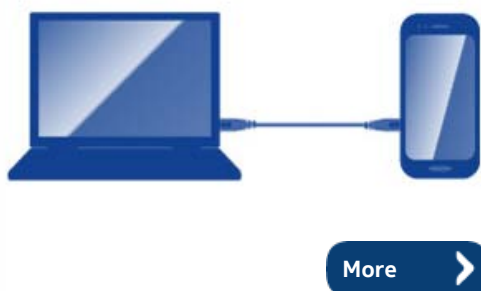
More >

Product controls and interfaces



More >

Service concept

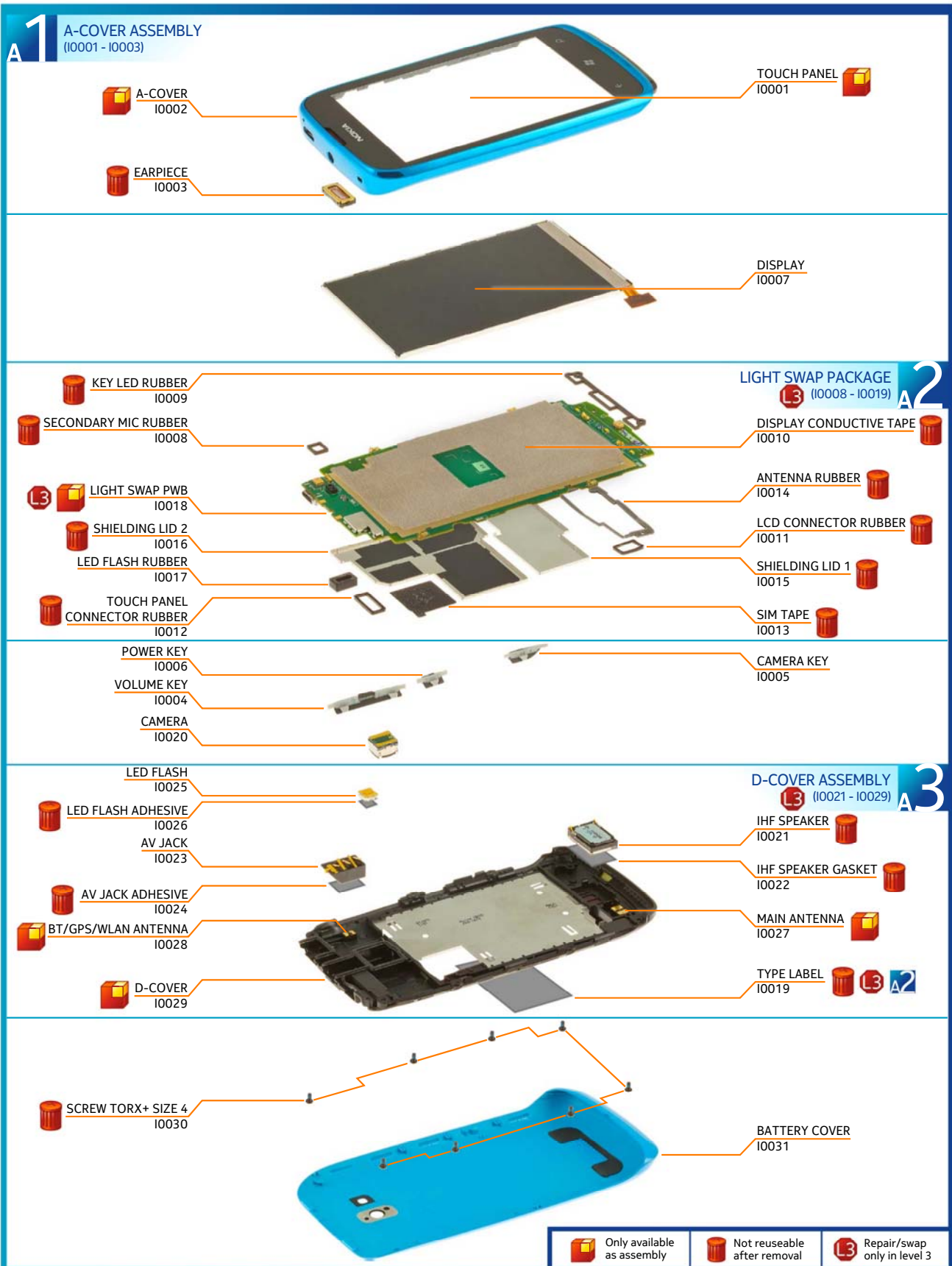


More >

Phone reset



More >





For disassembling you need the Nokia Standard toolkit version 2. You will also need the camera removal tool SS-287 and an AV plug.



Protect the A-COVER with protective film.



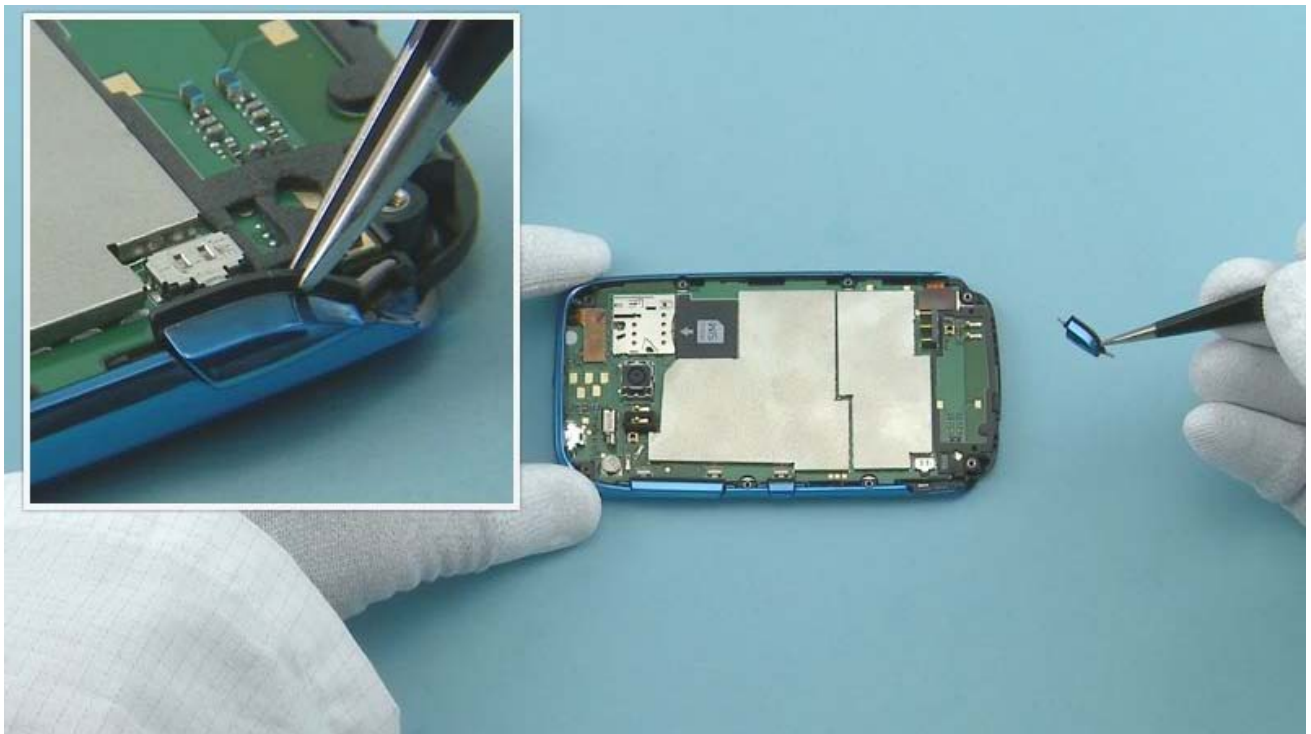
Insert the SRT-6 to the shown place and release the bottom end of the D-COVER.



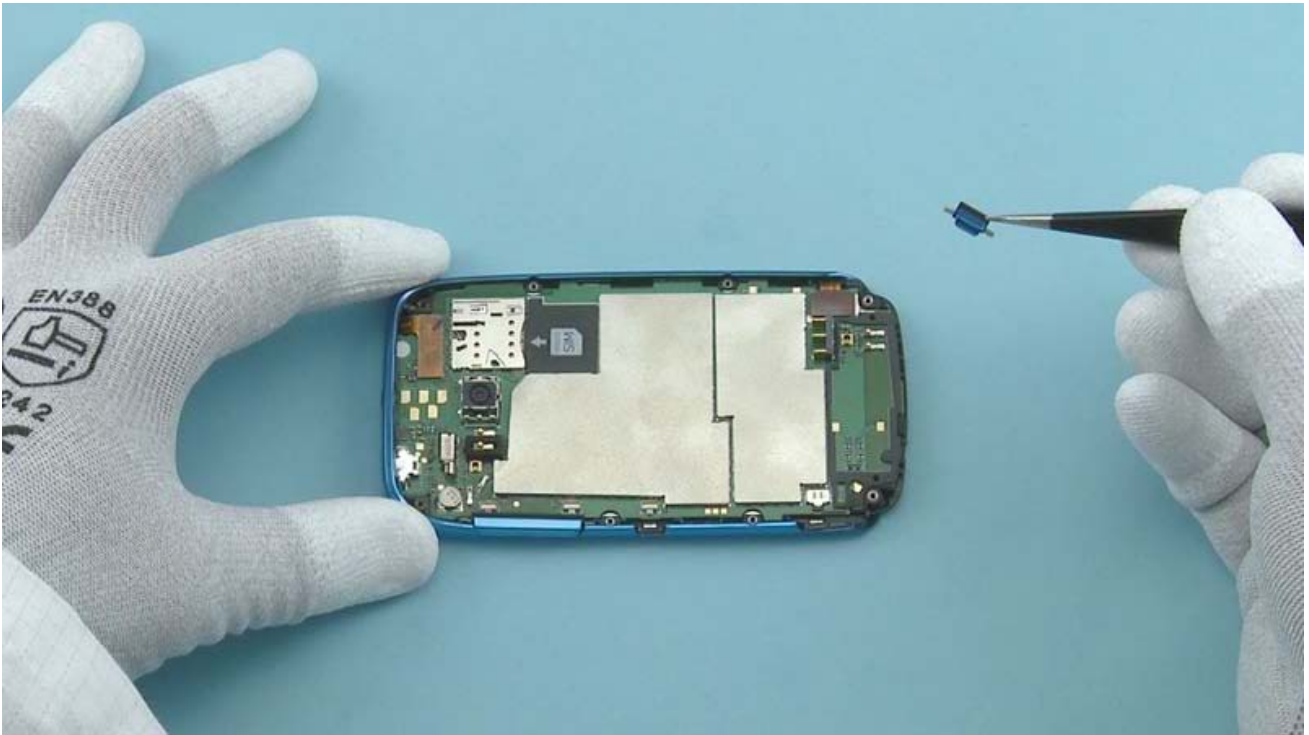
Release also both sides of the D-COVER with the SRT-6.



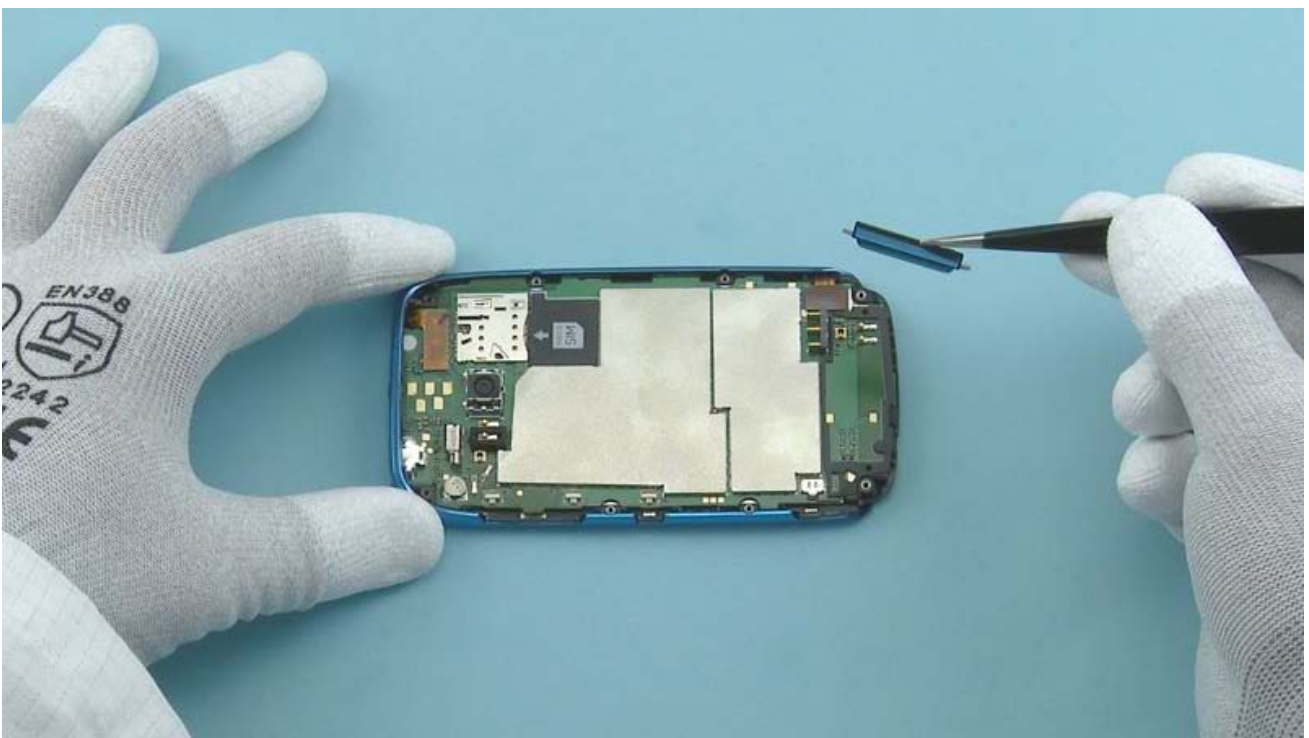
Lift up the bottom end of the D-COVER and pull it to the direction shown. The D-COVER can now be separated.



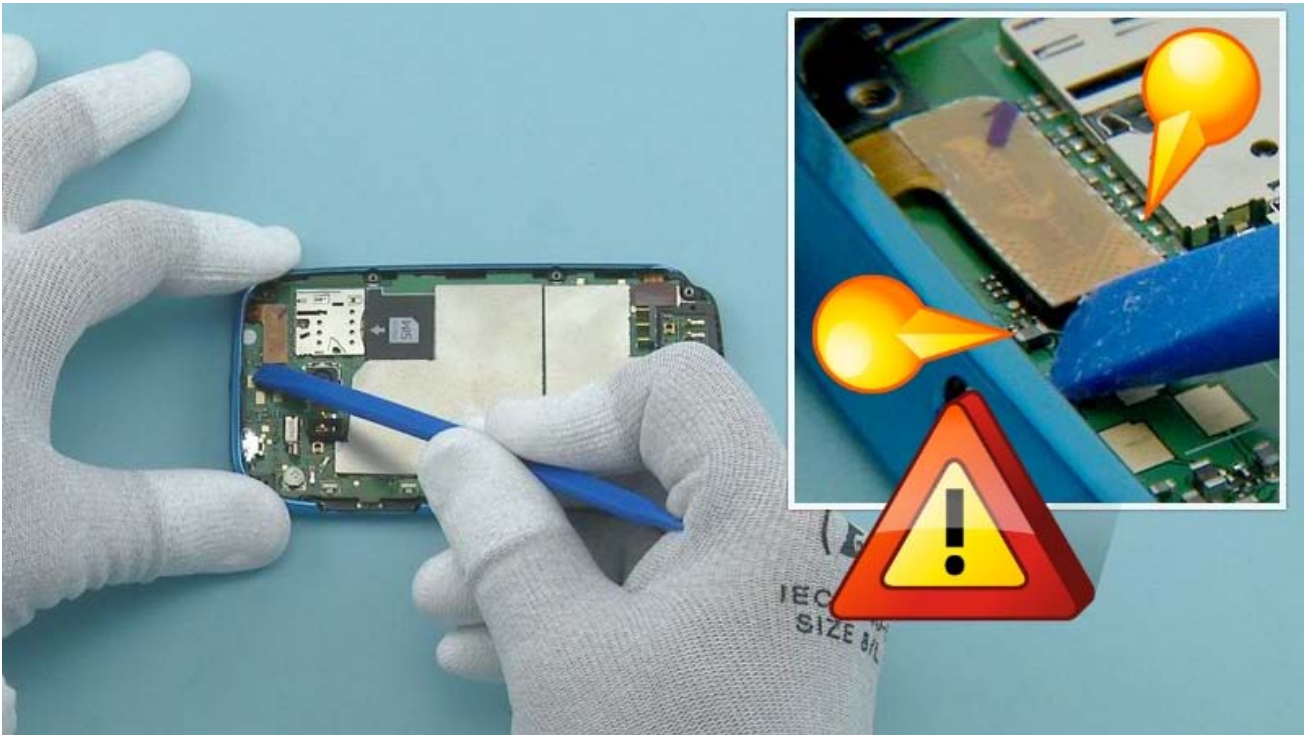
Remove the CAMERA KEY with tweezers.



Remove the POWER KEY with tweezers.



Remove the VOLUME KEY with tweezers.



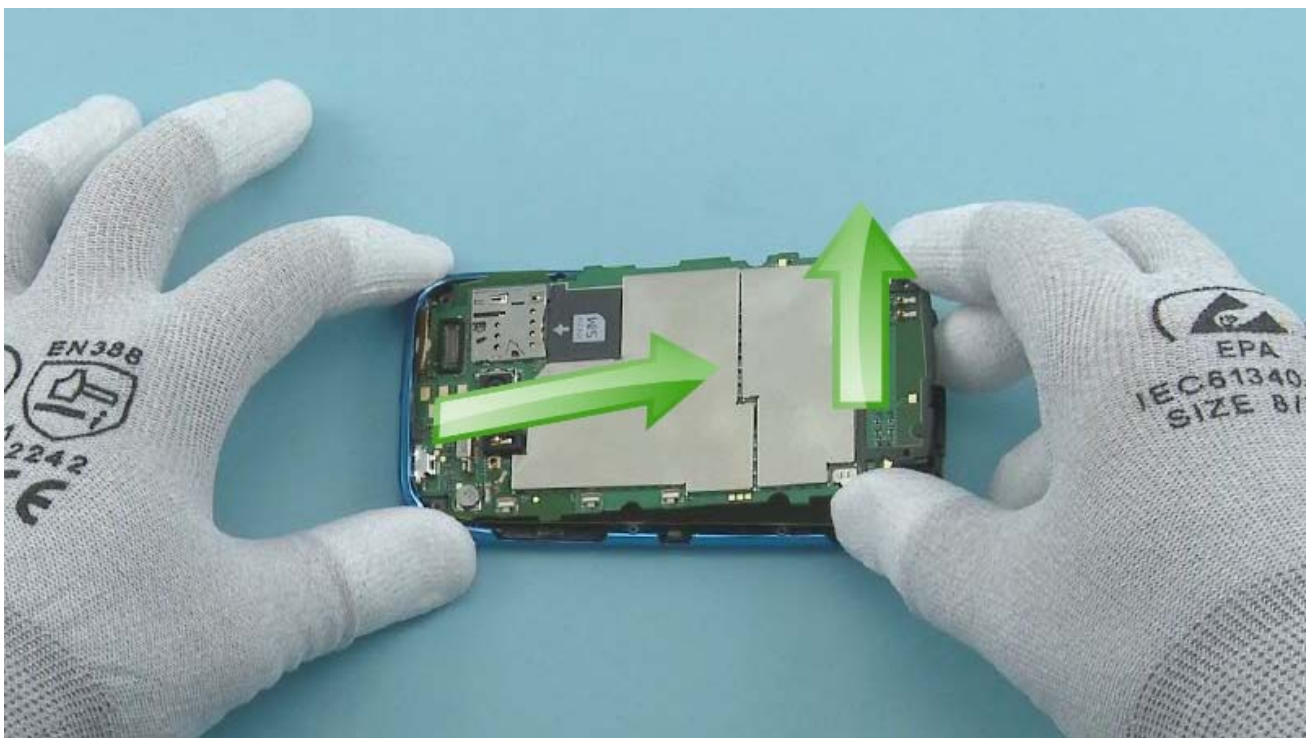
Use the SS-93 to open the TOUCH PANEL connector. Be very careful not to damage the connector or the small components around the connector.



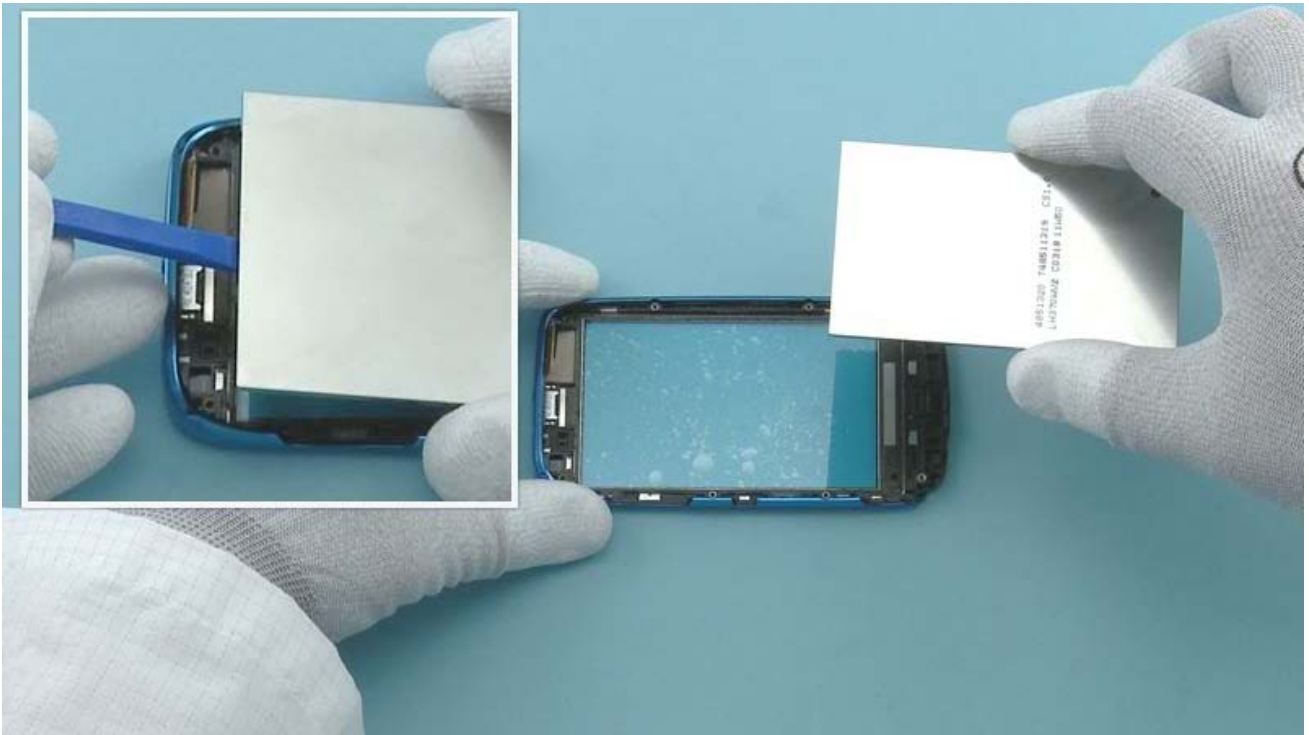
Open the DISPLAY connector with the SS-93. Be careful not to damage the connector or components nearby.



Open the two shown clips holding the ENGINE BOARD with the sharp end of the SS-93.



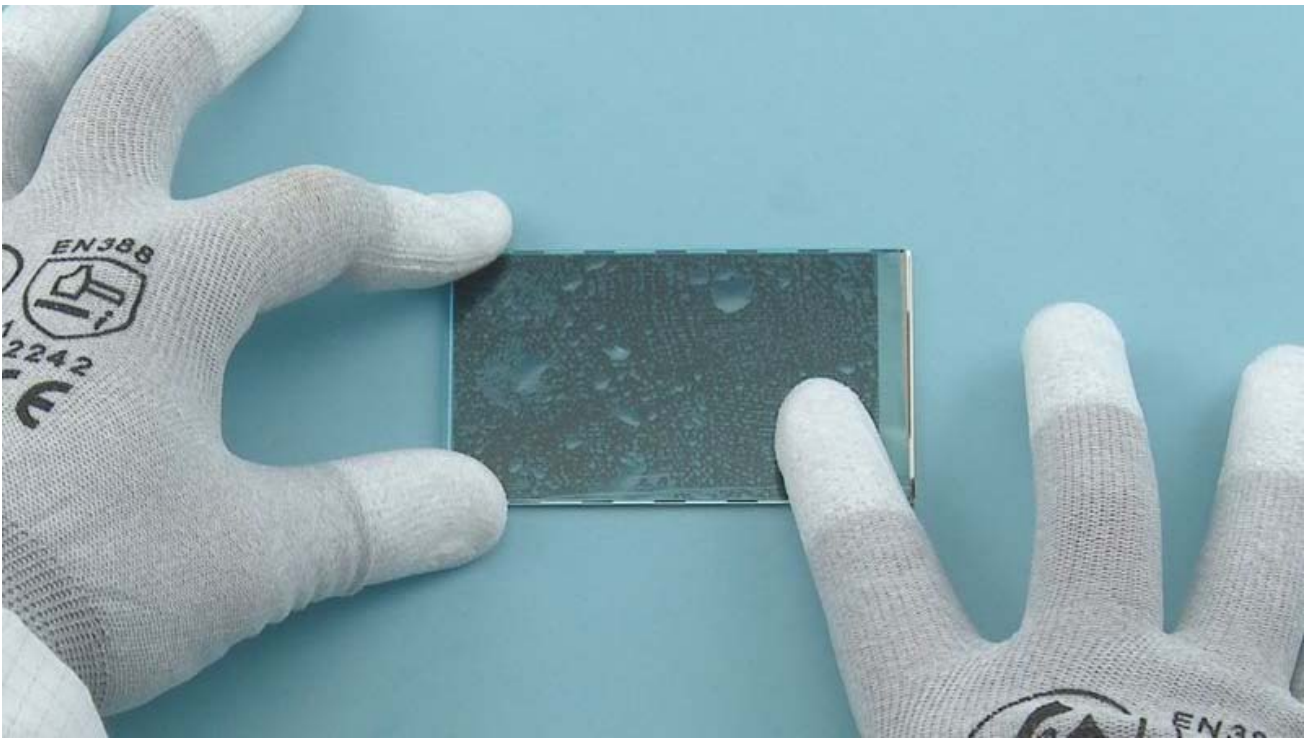
Lift up the bottom end of the ENGINE BOARD and pull it to the direction shown. The ENGINE BOARD can now be separated.



Lift up the DISPLAY with the SS-93 and remove it.



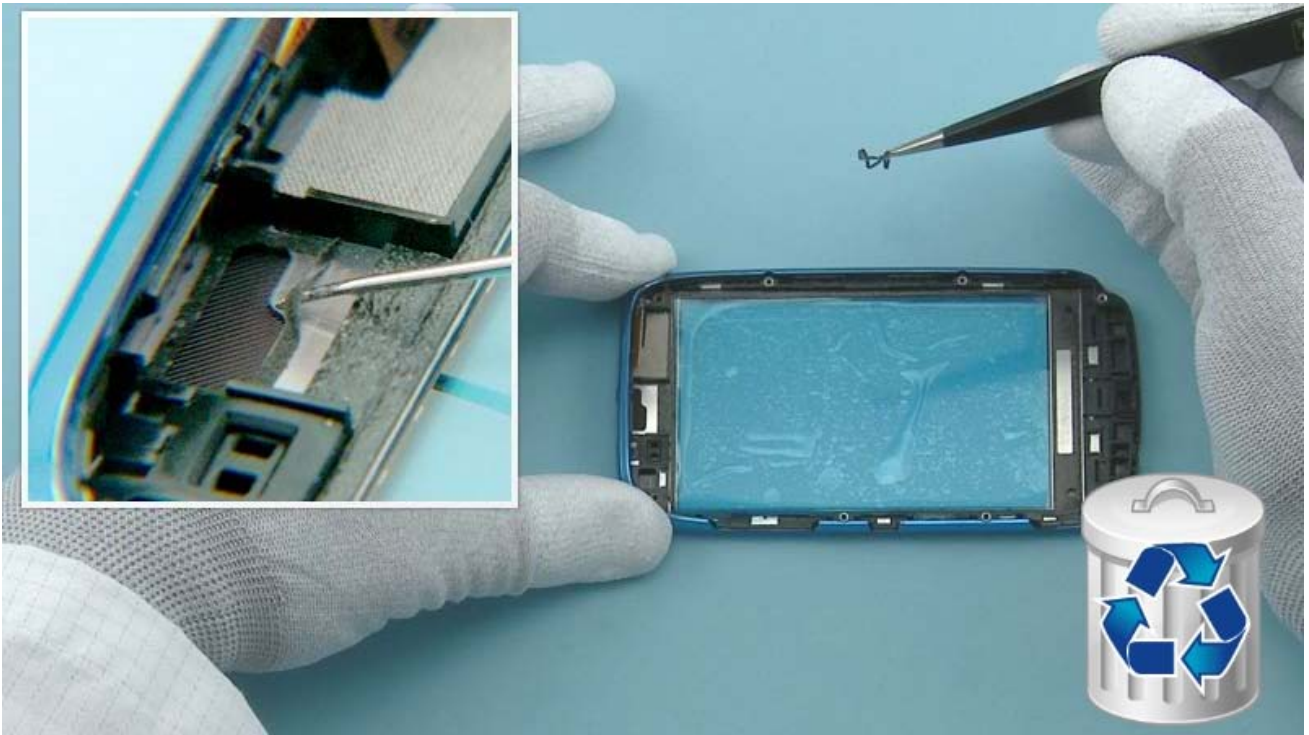
Protect the other side of the A-COVER with protective film.



Protect the DISPLAY with protective film.



Release the EARPIECE with the dental tool. Be careful not to injure yourself with the sharp end of the dental tool! Remove the EARPIECE with tweezers. Do not use it again. Discard it.



Remove the EARPIECE adhesive remains from the A-COVER. Discard them.



Release the IHF SPEAKER with the SS-93 as shown.



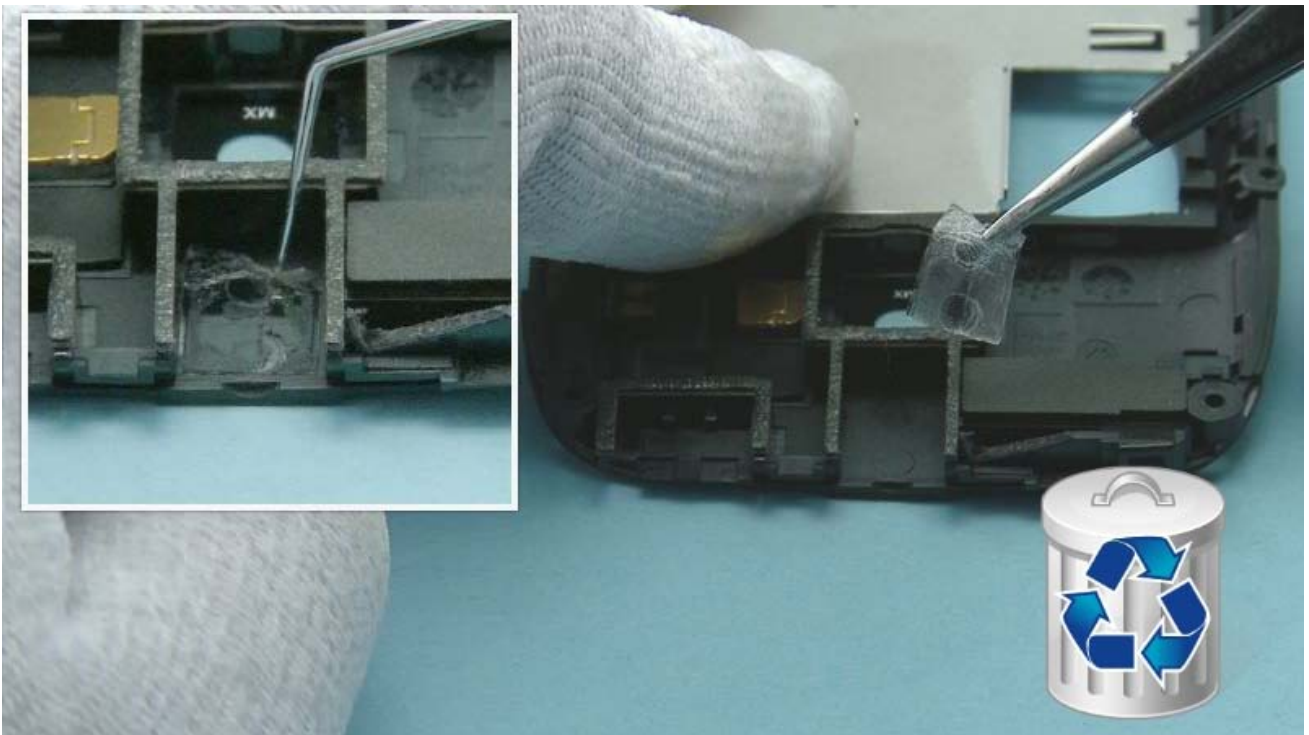
Remove the IHF SPEAKER and discard it.



Remove the IHF SPEAKER GASKET. The IHF SPEAKER GASKET is not reusable. Discard it.



Lift up and remove the AV JACK with an AV plug.



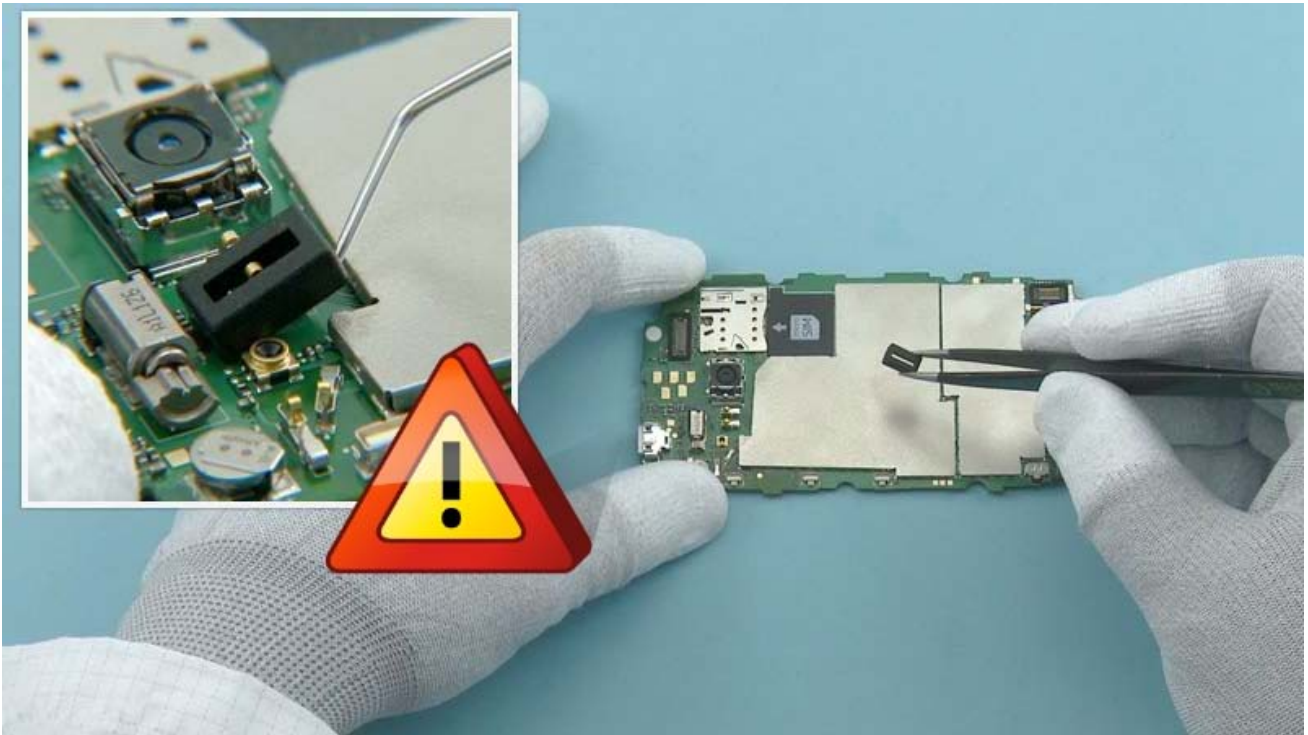
Remove the AV JACK ADHESIVE from the D-COVER. Do not use it again.



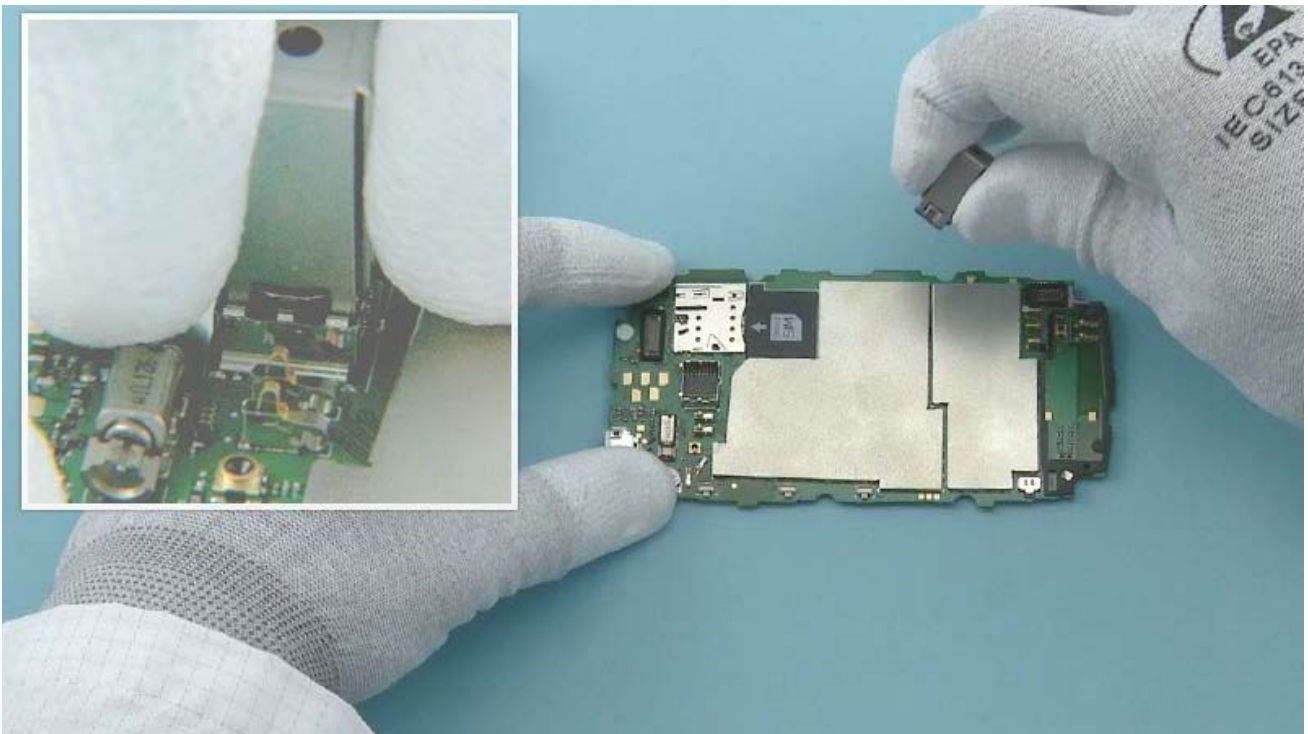
Push the LED FLASH gently with the sharp end of the SS-93. Remove the LED FLASH with tweezers.



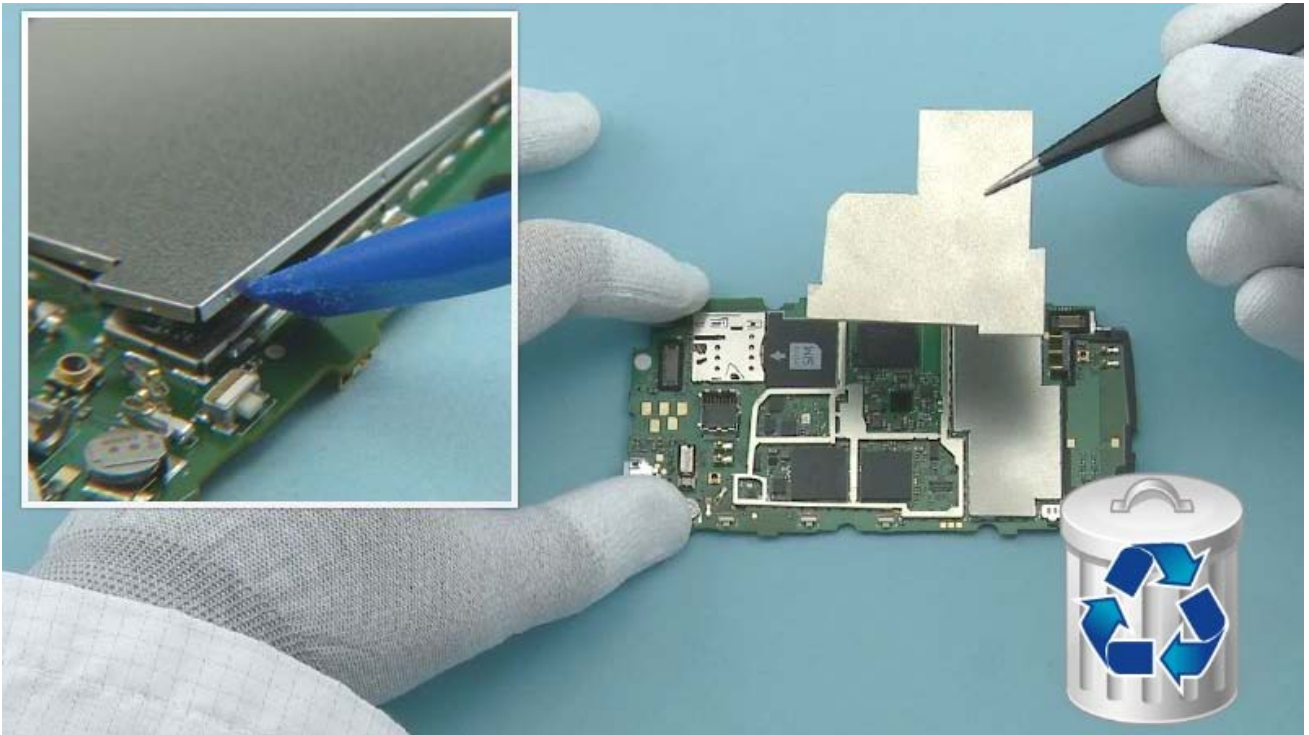
Remove the LED FLASH ADHESIVE. Discard it.



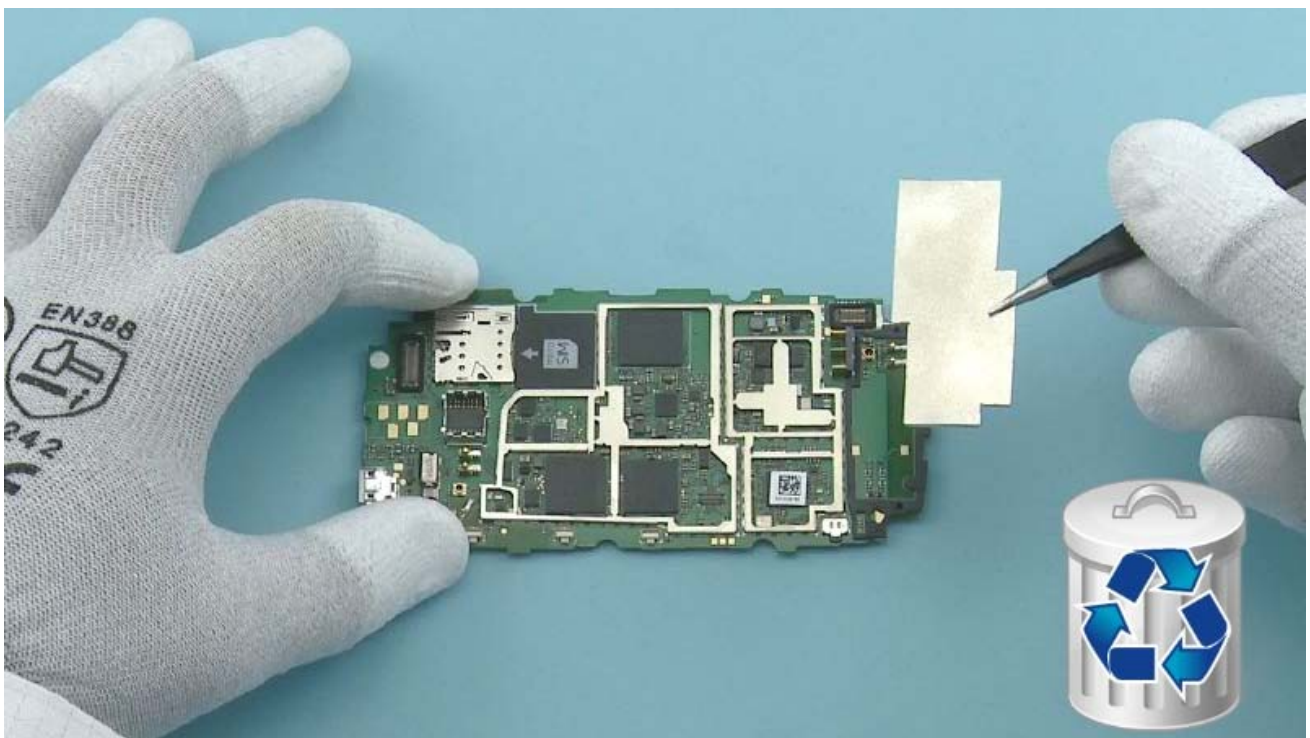
Release the LED FLASH RUBBER with the dental tool. Be careful not to damage the nearby components. Remove the LED FLASH RUBBER with tweezers.



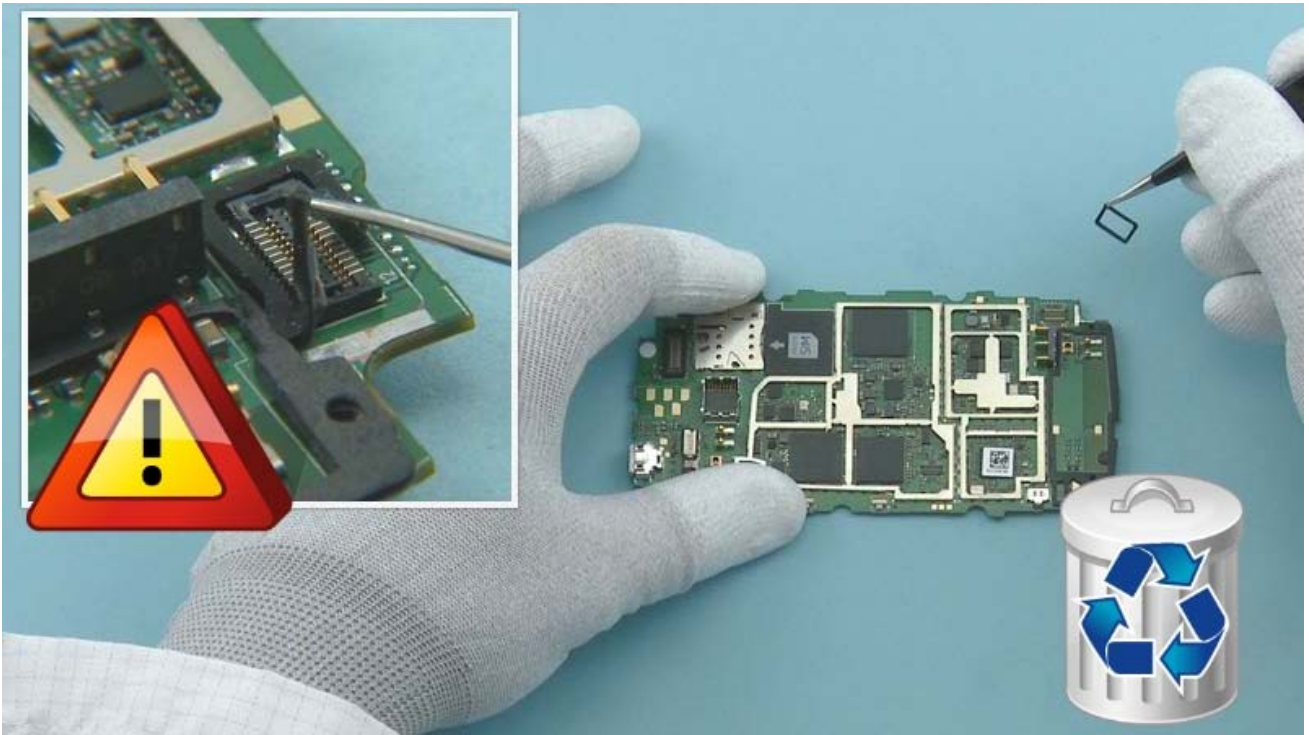
Remove the CAMERA with the camera removal tool SS-287. Please note that the tool used in this picture is not SS-287.



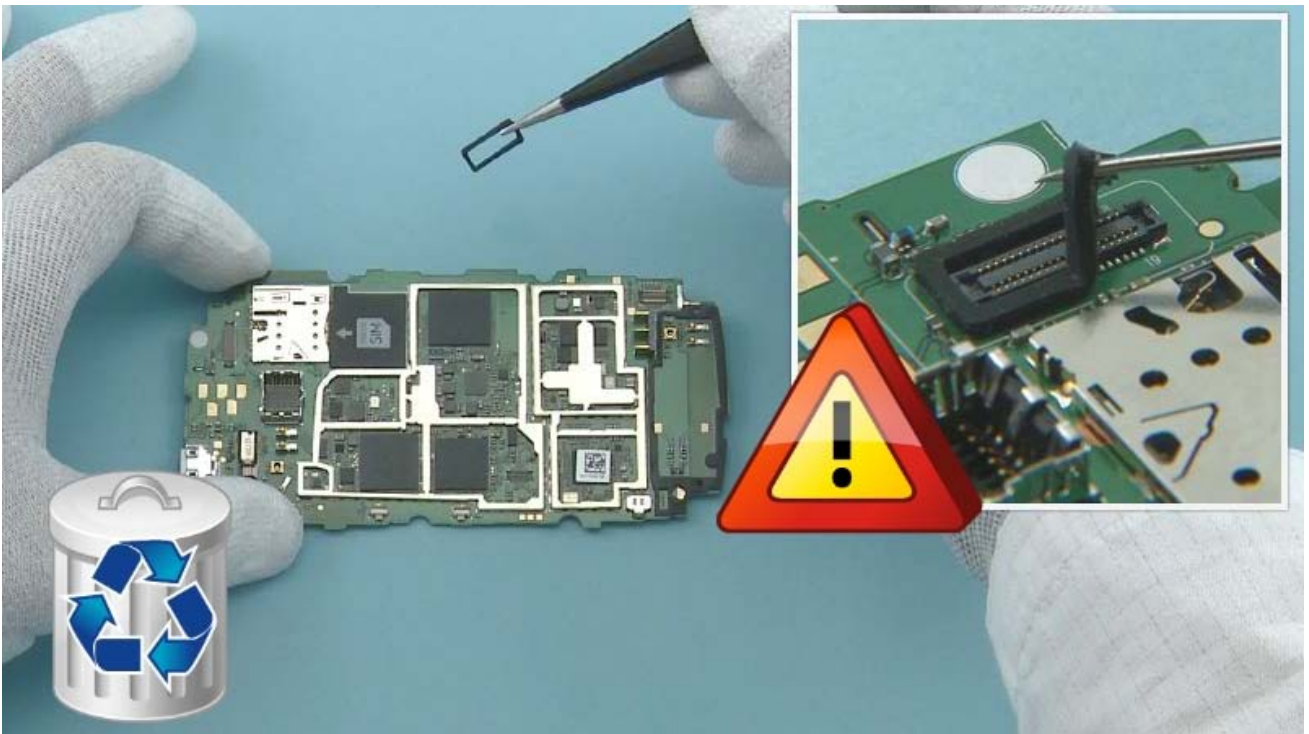
Release the SHIELDING LID 2 with the SS-93. Remove it with tweezers and discard it.



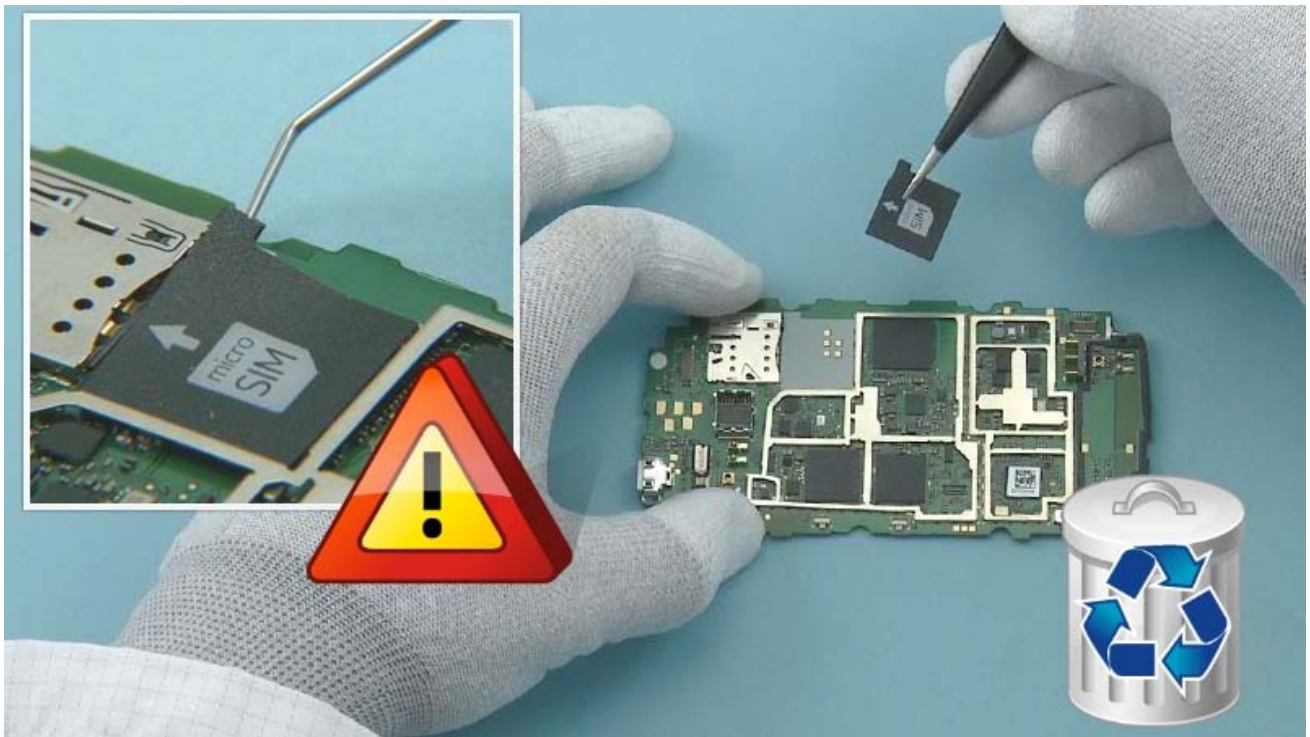
Release also the SHIELDING LID 1 with the SS-93. Remove it with tweezers. Do not use it again. Discard it.



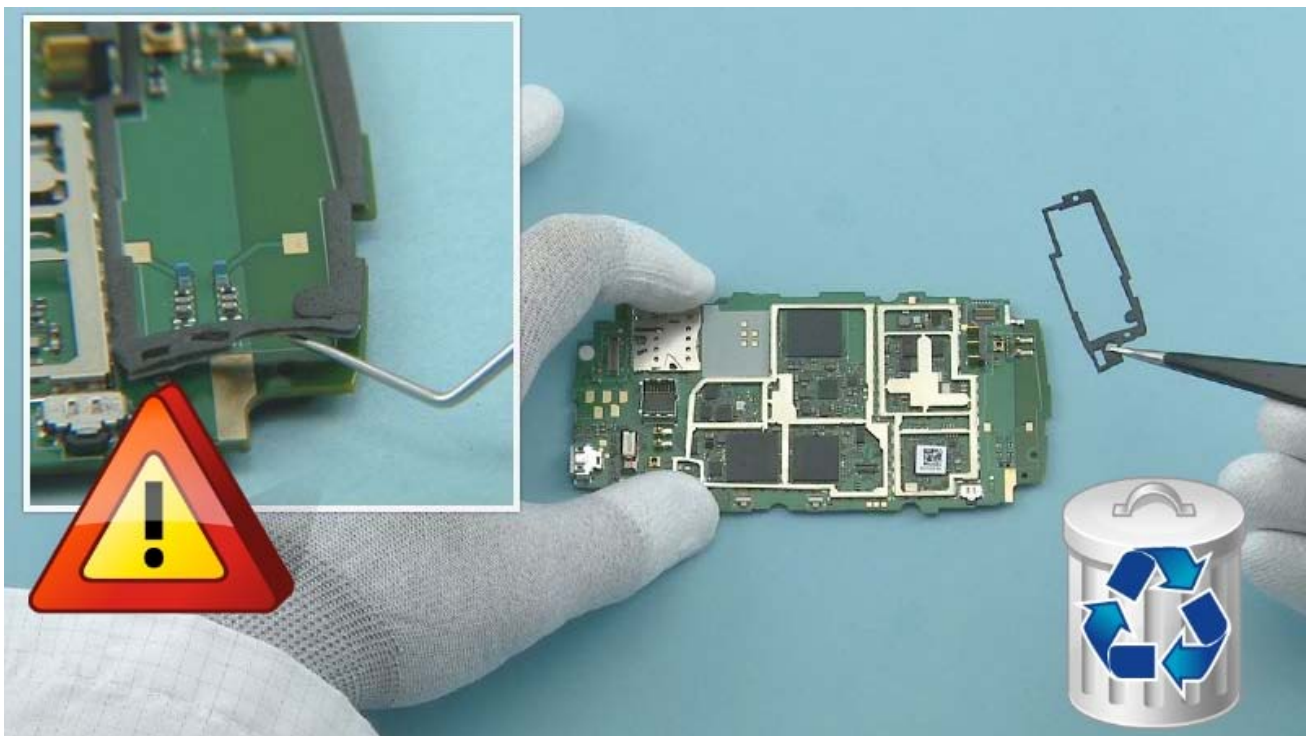
Release the LCD CONNECTOR RUBBER with the dental tool. Be careful not to damage the nearby components. Remove it with tweezers. Do not use it again. Discard it.



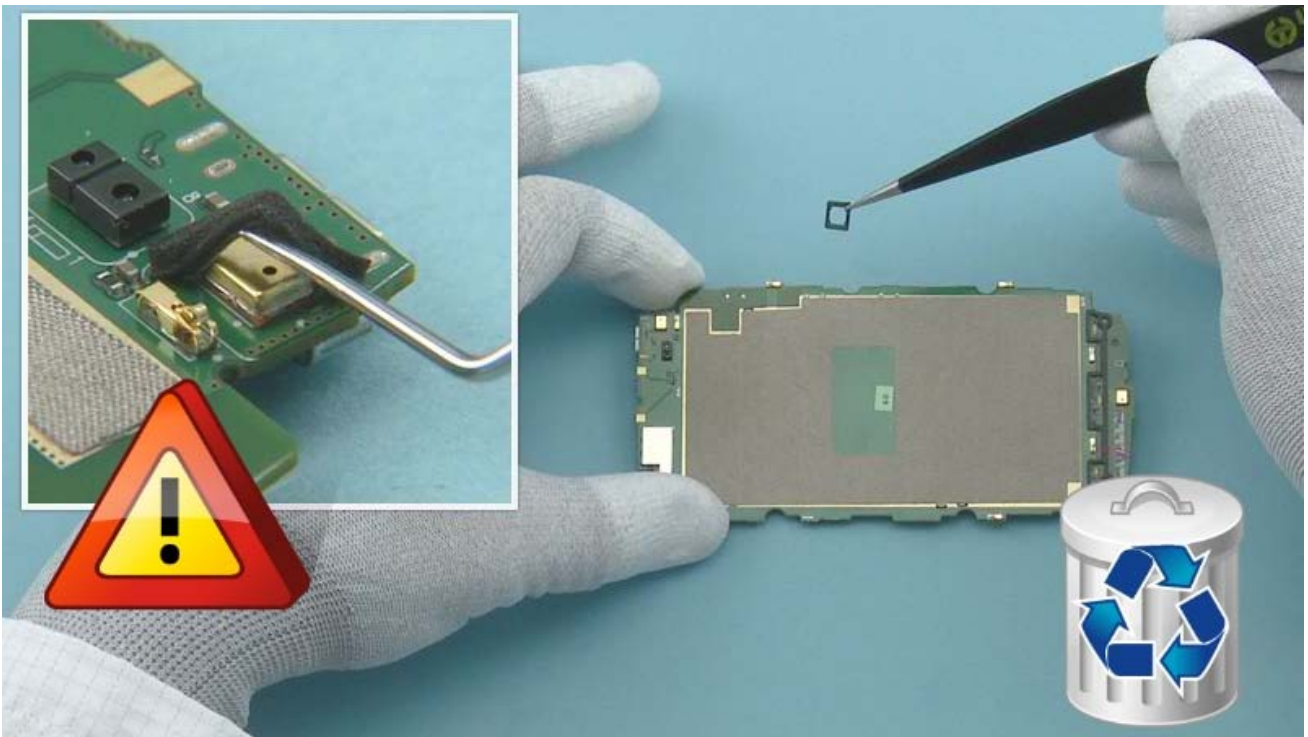
Release the TOUCH PANEL CONNECTOR RUBBER with the dental tool. Be careful not to damage the nearby components. Remove it with tweezers. Do not use it again. Discard it.



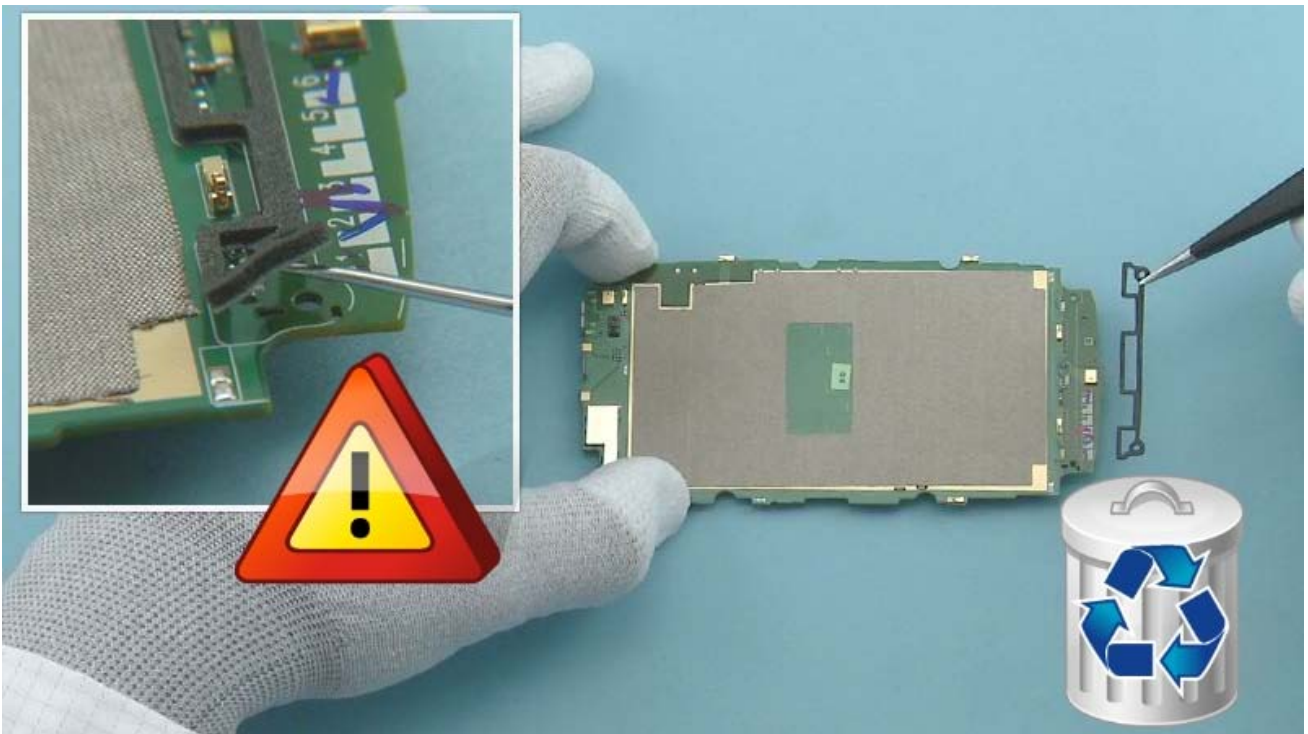
Lift up the SIM TAPE with the dental tool. Be careful not to damage the nearby components. Remove it with tweezers. Do not use it again. Discard it.



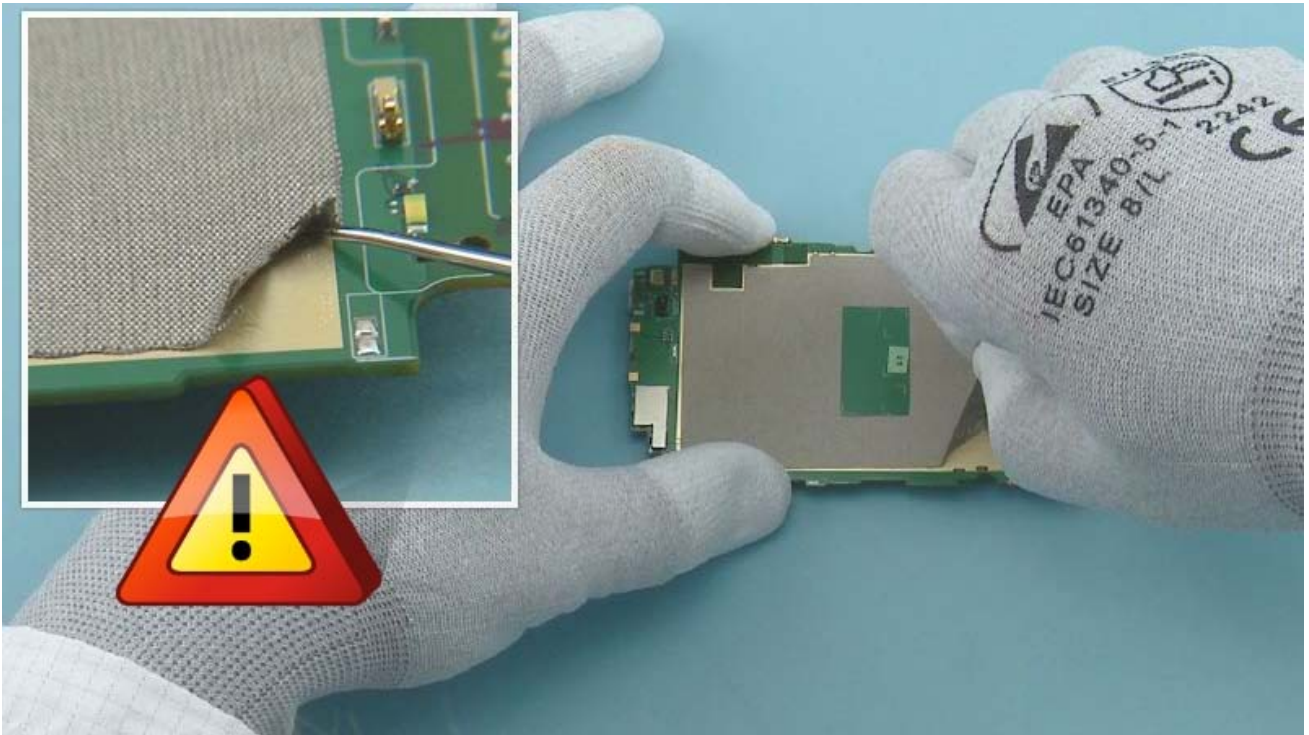
Release the ANTENNA RUBBER with the dental tool. Be careful not to damage the nearby components. Remove it with tweezers. Discard it.



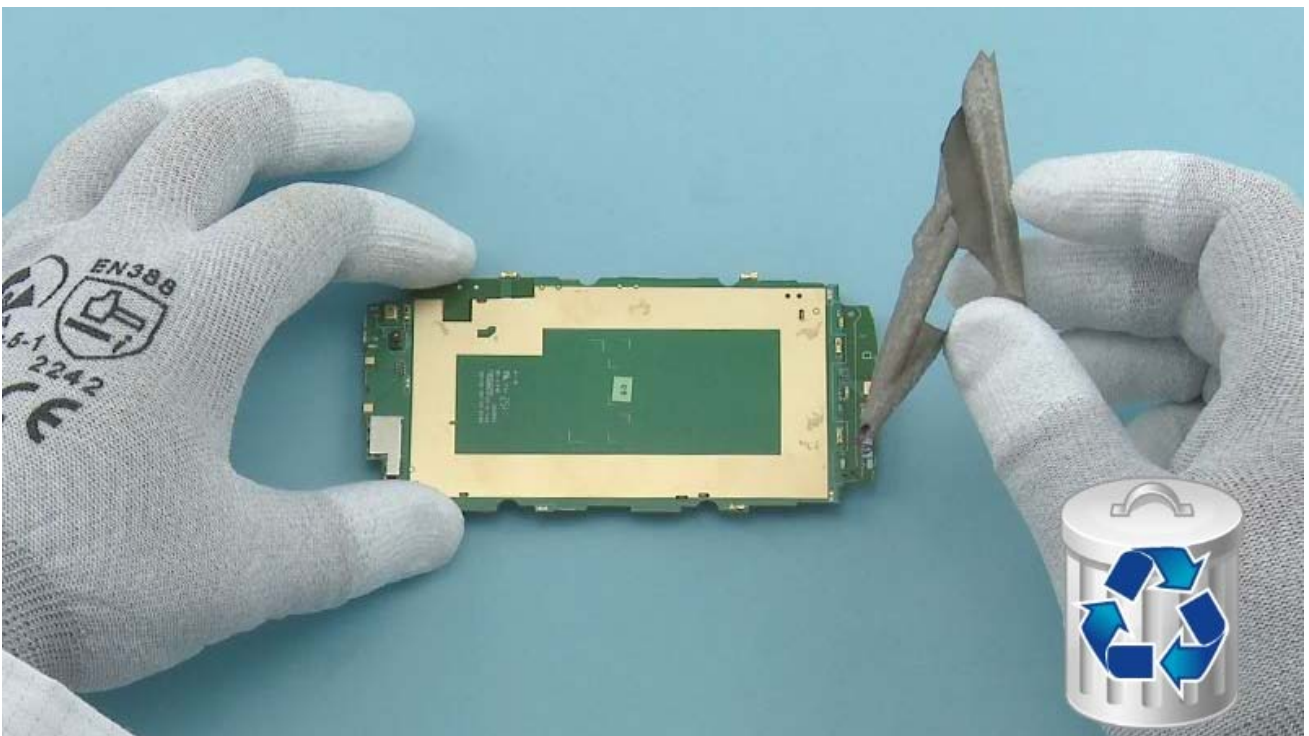
Release the SECONDARY MIC RUBBER with the dental tool. Be careful not to damage the SECONDARY MIC or any nearby components. Remove it with tweezers. Do not use it again.



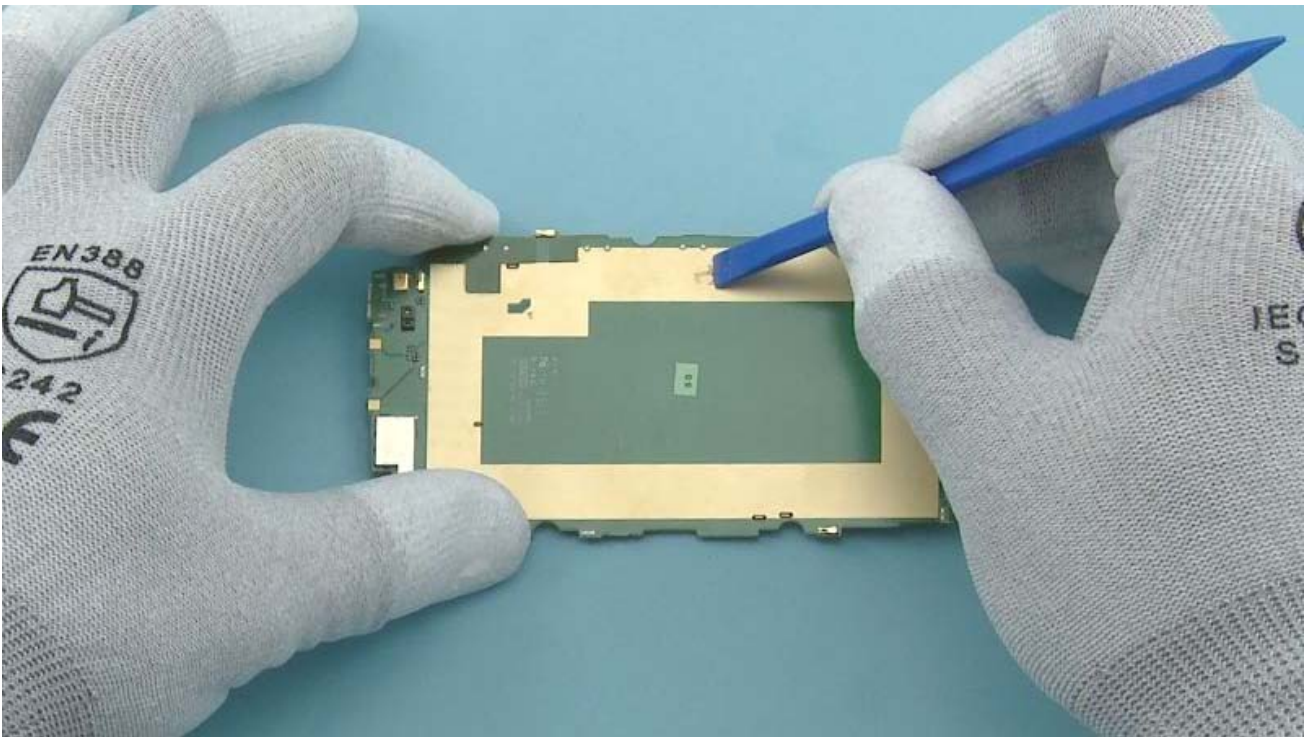
Release the KEY LED RUBBER with the dental tool. Be careful not to damage the nearby components. Remove it with tweezers. Do not use it again. Discard it.



Release one corner of the DISPLAY CONDUCTIVE TAPE with the dental tool. Be careful not to damage the ENGINE BOARD. Slowly peel off the DISPLAY CONDUCTIVE TAPE.



The DISPLAY CONDUCTIVE TAPE is not reusable. Discard it.

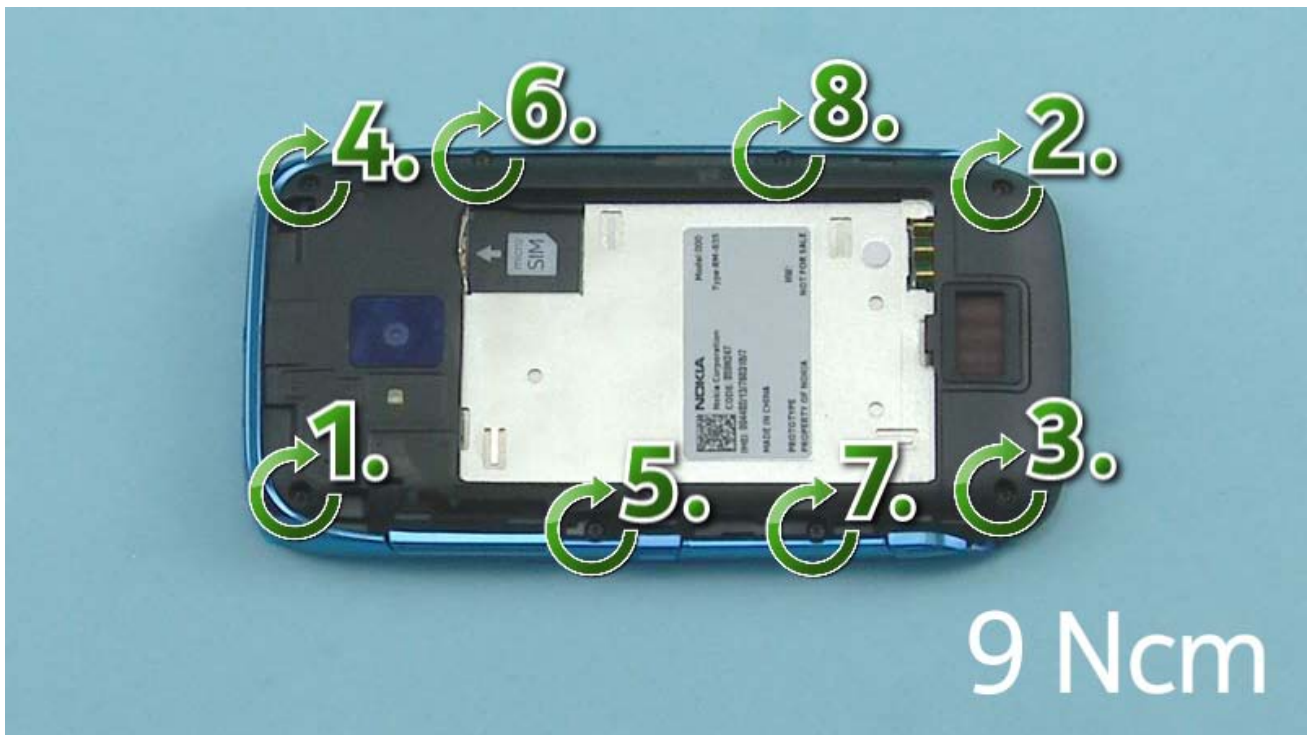


Remove the DISPLAY CONDUCTIVE TAPE adhesive remains from the engine board with the SS-93.

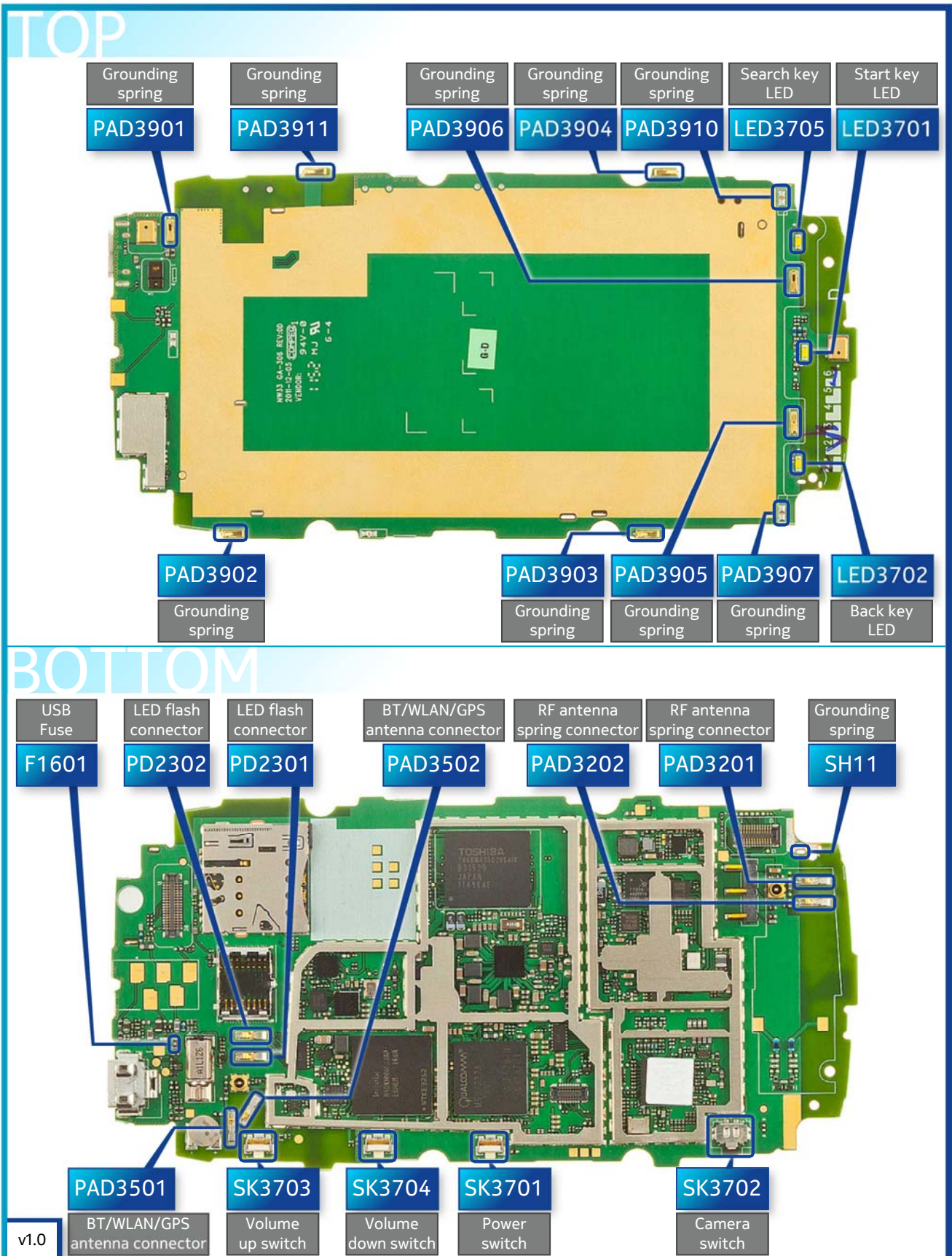


The Nokia Lumia 610 disassembly procedure is complete.

-END OF DISASSEMBLY-



Fasten the eight Torx+ size 4 screws to the torque of 9 Ncm in the order shown.





CA-190CD Service cable



AC-50 USB charger



SS-287 Camera removal tool



Nokia Standard Toolkit (v2)

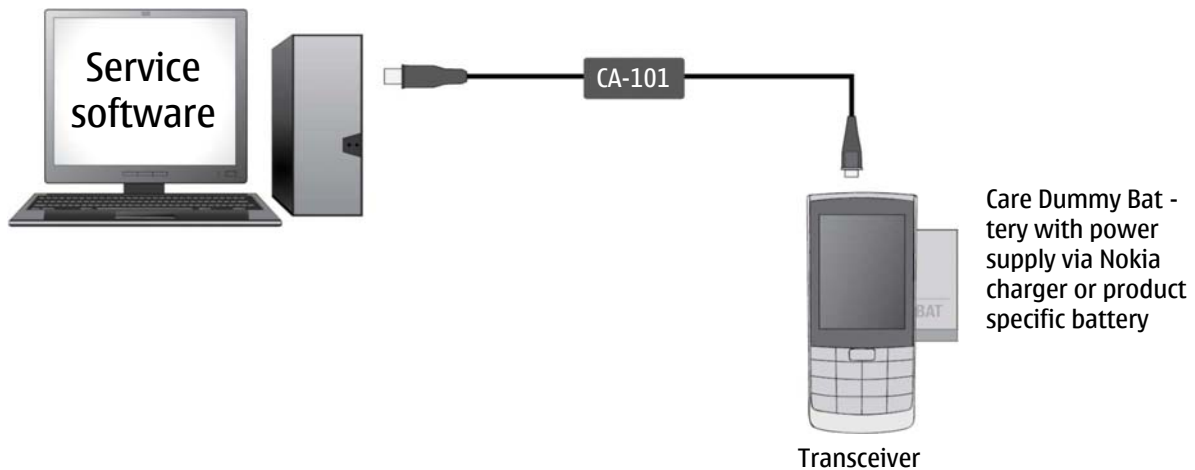
For more information, refer to the Service Bulletin (SB-011) on Nokia Online. Supplier or manufacturer contacts for tool re-order can be found in "Recommended service equipment" document on Nokia Online.



- 1 — Strap holder
- 2 — Nokia AV 3.5 mm connector
- 3 — Micro USB connector
- 4 — Secondary microphone
- 5 — Earpiece
- 6 — Ambient light & Proximity sensor
- 7 — Touch screen
- 8 — Start key
- 9 — Back key
- 10 — Search key
- 11 — Microphone
- 12 — Camera
- 13 — Camera flash
- 14 — Volume keys
- 15 — Power/Lock key
- 16 — Camera key
- 17 — Loudspeaker



Flashing concept



On Device Diagnostics Tool (ODDT)

The ODDT is an app for performing basic device hardware troubleshooting at Nokia Care Points. The ODDT is not visible on retail phones and it is intended only for use by trained personnel at Nokia Care Points.

To install the ODDT:

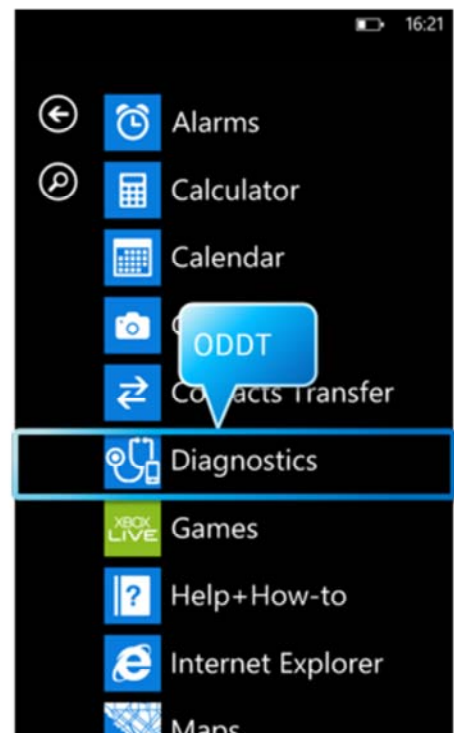
1. Enter ##634# on the on-screen keypad
2. Diagnostics app appears in Apps list

To remove the ODDT:

1. Tap and hold Diagnostics
2. Tap uninstall

Note: always uninstall the tool before returning the phone to the consumer!

For more information on using the ODDT, see KICS TR2816.



Hardware reset

If the phone hardware is jammed, you should first recommend that the consumer performs a hardware reset. The hardware reset does not reset the Windows Live ID or remove any consumer data.

To perform a hardware reset remove the battery and reinsert it. Boot up the phone normally.



Software / operating system (OS) reset

The software / operating system (OS) reset returns the phone to its out-of-the-box state. Note that this procedure erases all consumer data! Always first try to perform a hardware reset.

About menu

- Use this procedure if the consumer knows the lock code
- This procedure warns the consumer about data loss!
- Tap **Settings > About > reset your phone**

Note

- Nokia Lumia 610 does not support OS reset using hardware keys!



Version	Date	Description
1.0	05.03.2012	First published version